

CELEBRATING 50 YEARS

# PAST IS PROLOGUE

BUILDING A BRIDGE TO THE FUTURE

## Labor as a Strategic Partner in Public Advocacy

ACCT  
LEADERSHIP  
CONGRESS

#ACCT2019

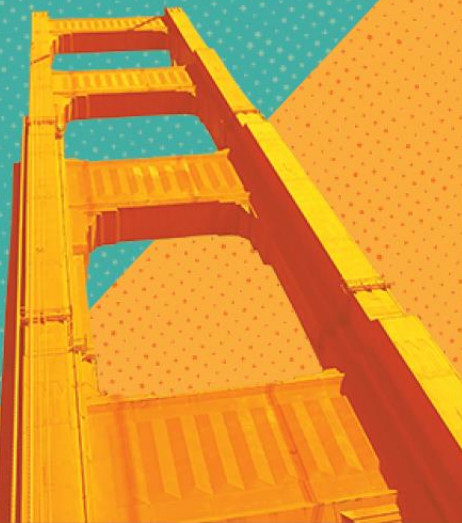




# Presented By:

**Chelsea Mason, Moderator**

- ❖ Susan A. Palmer, Trustee, Renton Technical College
- ❖ Jackie Boschok, Trustee, Green River College
- ❖ Tom Lux, Trustee, Shoreline Community College
- ❖ Mark P. Martinez, Trustee, Clover Park Technical College
- ❖ Beth Thew, Trustee, Community Colleges of Spokane







UNITE  
HERE!



ACCT  
LEADERSHIP  
CONGRESS

#ACCT2019

# Examples of Union Represented Industries:

- Administration
- Aerospace
- Agriculture
- Construction
- Education
- Energy
- Film
- Forestry
- Grocery/Retail
- Healthcare
- Hotel & Hospitality
- Information Technology
- Musicians
- Parks & Recreation
- Public Service
- Transportation & Logistics





# Washington State Community & Technical Colleges

Washington State has 30 College Districts and 34 Community & Technical Colleges

370,000 students attend our Community & Technical Colleges

Trustees are appointed by the Governor to serve 5 year terms and are subject to Senate Confirmation

State law requires a Labor Trustee to serve on Technical College Boards

Bates Technical College, Bellingham Technical College, Clover Park Technical College, Lake WA Institute of Technology and Renton Technical College

State law requires a Labor Representative to serve on the State Board for Community & Technical Colleges









# Examples: Where Labor Advocates for CTCs

GOVERNMENT  
programs  
policies  
funding



EDUCATION  
engagement  
promotion  
mentorship



COMMUNITY  
awareness  
partnerships  
support





# Why We're Invested

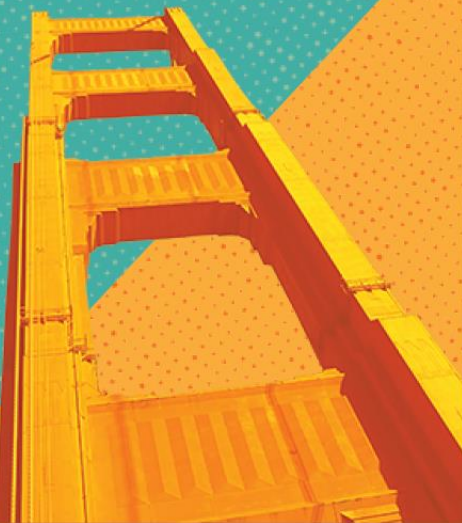
- Our members are Community & Technical College (CTC) students
- Our members are CTC staff & faculty
- Union industries rely on a strong CTC system
- Registered apprenticeships are integrated with CTCs
- We believe in access & opportunity for all students and workers



Jessica Bush, 30, who served 7½ years in prison for armed robbery, is now an Ironworkers Local #86 apprentice in Tacoma, Wash., making nearly \$25 an hour and earning credits toward a community-college degree. The 5-



# Advocacy Assets





# Bridging Advocacy Between Agencies & Boards



*Labor sits on many boards and committees focused on education, workforce development and supporting the community*





# Help Moving the Needle: Capital Projects



SOUTH SOUND  
BUSINESS

## Bates to break ground on new building

Speakers included the Mayor of Tacoma, leadership of Bates Technical College, **Pierce County Building & Construction Trades Council Executive Secretary Mark Martinez**, and others.

*CTC construction projects create family wage jobs in local communities. Labor is an ally in helping secure capital funding.*





# Help Moving the Needle: Student & System Support

*Labor was a key CTC partner in a landmark advocacy campaign to increase funding for:*

Student Scholarships

High Demand Programs

Faculty Salary Increases

Incumbent Worker Training

Career Connected Learning



**Legislature Creates Washington College Grant Scholarship Program to Help Families Afford College & Apprenticeships; Expands Community College**

April 28, 2019



# Help Moving the Needle: Community Awareness

*One of Washington's faculty unions led a public campaign in 2019 to raise awareness about the need to (re-)invest in community & technical colleges. It included education, rallies, lobbying, media outreach and more.*



AFT Washington, AFL-CIO



# Building a Bridge with Labor in Your State

## RESOURCES & RELATIONSHIPS

- State AFL-CIO
- County or Regional Central Labor Councils
- State Building Trades Councils
- County or Regional Building Trades Councils
- Staff & Faculty Unions

## OPPORTUNITIES TO INCLUDE LABOR

- State CTC Governing Board
- College Boards of Trustees
- Advisory Committees
- Foundation Boards





# Want to be a part of an ACCT Labor Caucus?

## Sign up today or contact:

Kairie Pierce, Workforce Development Director

Washington State Labor Council, AFL-CIO

[kpierce@wslc.org](mailto:kpierce@wslc.org)

Kairie can also help connect you with labor partners in your community.